



SPECIFICATION

DVB-T Encoder Modulator

Revision:1.0

1. Scope :

The HD Encoder Modulator supports 4 CVBS, 4 YPbPr and 4 HDMI input and 1 RF F female output. (The HDMI Input supports HDCP)

A channel can carry up to four high-definition programming.

After coded and modulated, the input signal can be directly output or mixed output with original TV signal. It can be widely used in home entertainment, security, protection monitoring, hotel LCD panels, shopping mall advertising etc..

2. General Specification :

2-1

INPUT : HDMI(Type A)

Component Video (YPbPr), RCA Jack (75 ohm)

Composite (CVBS), RCA Jack (75 ohm)

OUTPUT : DVB-T modulator (F female)

Frequency : 100-858MHz

2-2 Temperature Range :

Operating Temperature 0 ~ +50 °C

Storage Temperature -10 ~ +70 °C

2-3 Weight : 195g

3. System

Local Interface control buttons + LCD panel

* The LCD panel is optional

(The DVBT-TX05HL is equipped with LCD panel)

Remote management Web NMS

NMS Interface RJ45

4. Feature

Integrated encoder and modulator



SPECIFICATION

DVB-T Encoder Modulator

Revision:1.0

5. Electrical Specification

5-1 Power Supply : DC +12V, 1.2A

5-2 Output Level : 90 ~ 105dBuV

5-3 Video :

Input Format : HDMI ; Component Video (YPbPr) ;
Composite (CVBS)

Encoding : HDMI: MPEG4 H.264/AVC

CVBS/YPbPr: MPEG4 H.264/AVC

Resolutions : HDMI: 1280*720_60p , 1280*720_50p

CVBS: 720*576_50i , 720*480_60i

YPbPr: 1920*1080_60i , 1920*1080_50i

1280*720_60p , 1280*720_50p

Connector : HDMI(Type A)

Component Video (YPbPr), RCA Jack (75 ohm)

Composite (CVBS), RCA Jack (75 ohm)

5-4 Audio :

Input Format : HDMI ; analog stereo/mono

Encoding Format : ADPCM, MPEG-1 layer 2 audio
and AAC-LC streams.

Connector : HDMI embedded audio

RCA Jack (75 ohm)

5-5 DVB-T Modulation

Standard : DVB-T (ETSI EN 300 744)

Bandwidth : 7 / 8 MHz

Mode : 8K

Constellation : 64QAM

Guard Interval : 1/32

Code Rate : 7/8

Frequency Range : 100~858MHz

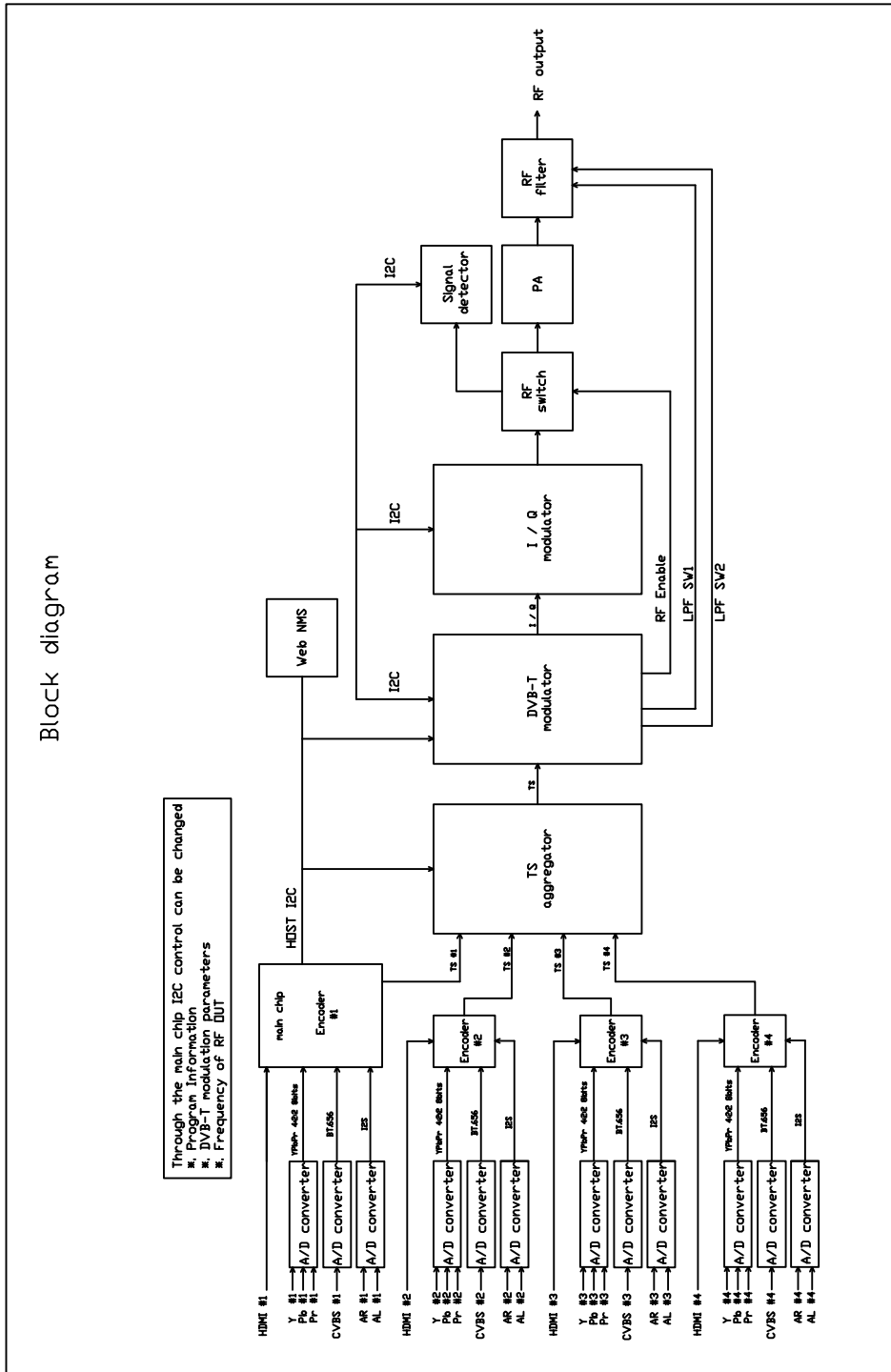
Output Level : 90 ~ 105dBuV

SPECIFICATION

DVB-T Encoder Modulator

Revision:1.0

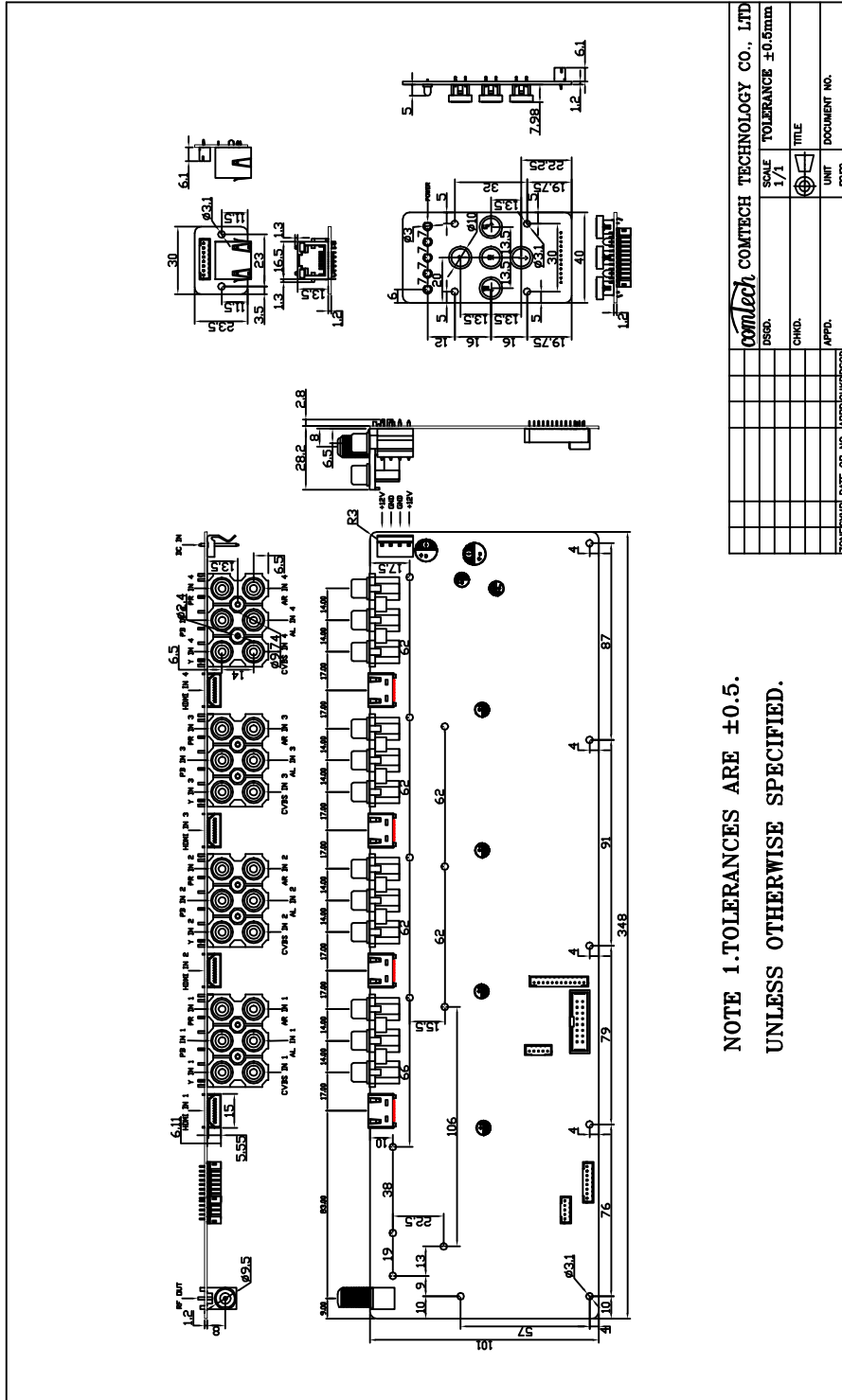
6. Block Diagram



SPECIFICATION

DVB-T Encoder Modulator

Revision:1.0



NOTE 1.TOLERANCES ARE ±0.5.
UNLESS OTHERWISE SPECIFIED.